
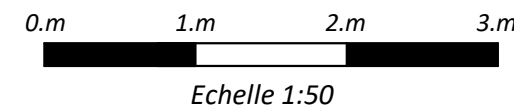


 Faux plafond

 Collecteur chauffage + sanitaires

Plan susceptible de modifications en fonction des études techniques



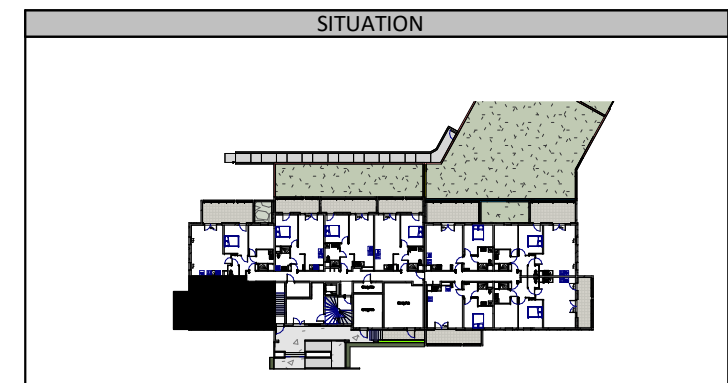
24, avenue Robert Schuman
57000 Metz
Tel: 03 87 18 37 20



Logements collectifs - BOTANIK

ZAC du Sansonnet - METZ

NIVEAU	TYPE	LOGEMENT
RDC	T3	A01



DETAIL DES SURFACES

SEJOUR/CUISINE	29.95 m ²
CHAMBRE 1	12.05 m ²
CHAMBRE 2	11.00 m ²
ENTREE	5.60 m ²
SDB	5.10 m ²
WC	1.95 m ²
PL	0.55 m ²
Surface habitable	66.20 m²
BALCON DALLE	8.50 m²
Surface extérieure	8.50 m²

INDICE	B	DATE	02.06.22
--------	---	------	----------