
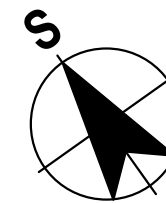
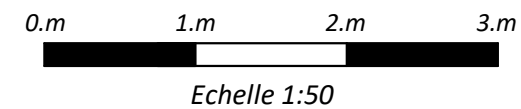


 Faux plafond

 Collecteur chauffage + sanitaires

Plan susceptible de modifications en fonction des études techniques



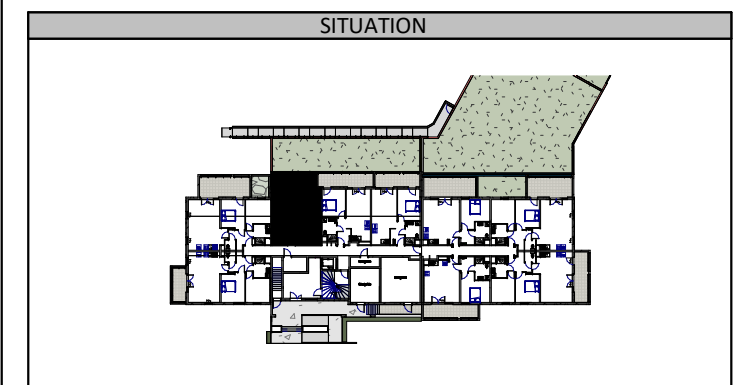
24, avenue Robert Schuman
57000 Metz
Tel: 03 87 18 37 20



Logements collectifs - BOTANIK

ZAC du Sansonnet - METZ

NIVEAU	TYPE	LOGEMENT
RDC	T2	A03



DETAIL DES SURFACES

SEJOUR/CUISINE	22.10 m ²
CHAMBRE	12.30 m ²
SDB	5.30 m ²
ENTREE	3.65 m ²
PL	1.25 m ²
Surface habitable	44.60 m²
TERRASSE ISOLEE ETANCHEE DALLEE	10.65 m²
Surface extérieure	10.65 m²

INDICE	B	DATE	02.06.22
--------	----------	------	-----------------