
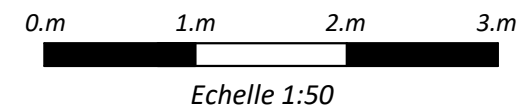


 Faux plafond

 Collecteur chauffage + sanitaires

Plan susceptible de modifications en fonction
des études techniques



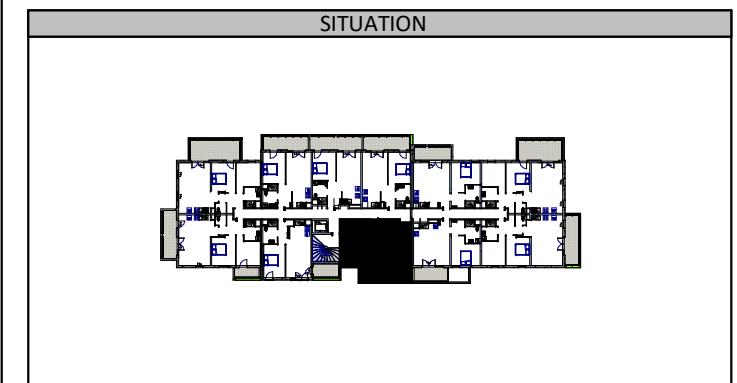
24, avenue Robert Schuman
57000 Metz
Tel: 03 87 18 37 20



Logements collectifs - BOTANIK

ZAC du Sansonnet - METZ

NIVEAU	TYPE	LOGEMENT
R+1	T2	A111



DETAIL DES SURFACES

SEJOUR/CUISINE	25.95 m ²
CHAMBRE	12.55 m ²
SDB	5.30 m ²
ENTREE	3.15 m ²
DGT	2.35 m ²
PL	1.05 m ²
Surface habitable	50.35 m²
BALCON DALLE	12.30 m²
Surface extérieure	12.30 m²

INDICE	B	DATE	02.06.22
--------	----------	------	-----------------