
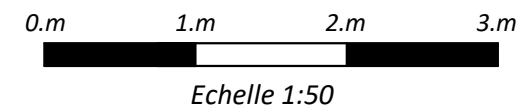


 Faux plafond

 Collecteur chauffage + sanitaires

Plan susceptible de modifications en fonction des études techniques



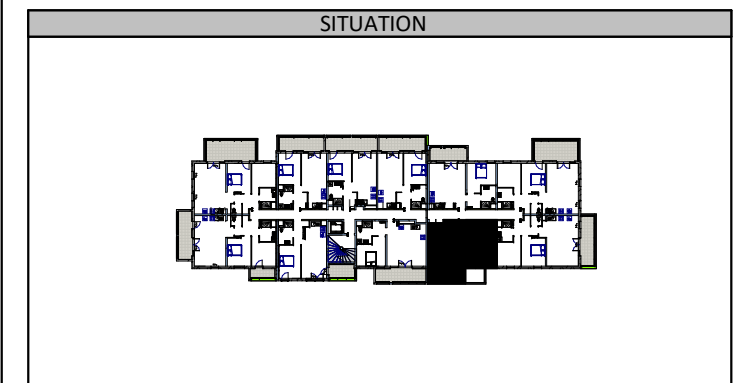
24, avenue Robert Schuman
57000 Metz
Tel: 03 87 18 37 20



Logements collectifs - BOTANIK

ZAC du Sansonnet - METZ

NIVEAU	TYPE	LOGEMENT
R+1	T2	A110



DETAIL DES SURFACES

SEJOUR/COUISINE	23.65 m ²
CHAMBRE	12.90 m ²
SDB	5.45 m ²
ENTREE	2.95 m ²
DGT	2.45 m ²
PL	1.20 m ²
Surface habitable	48.60 m²
BALCON DALLE	8.30 m ²
Surface extérieure	8.30 m²

INDICE	B	DATE	02.06.22
--------	---	------	----------