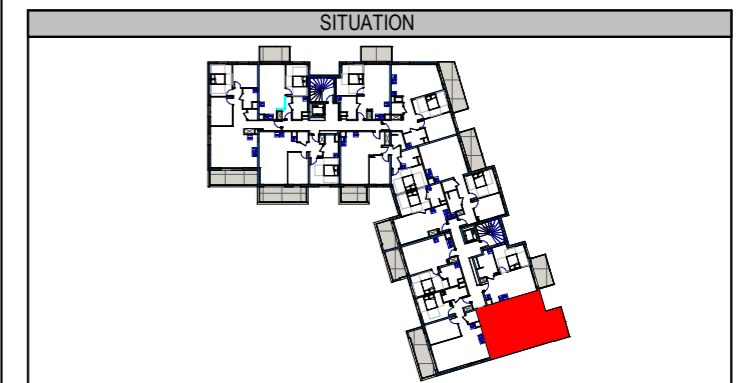




**Les Terrasses de l'Europe**  
Avenue Robert Schuman  
57190 FLORANGE

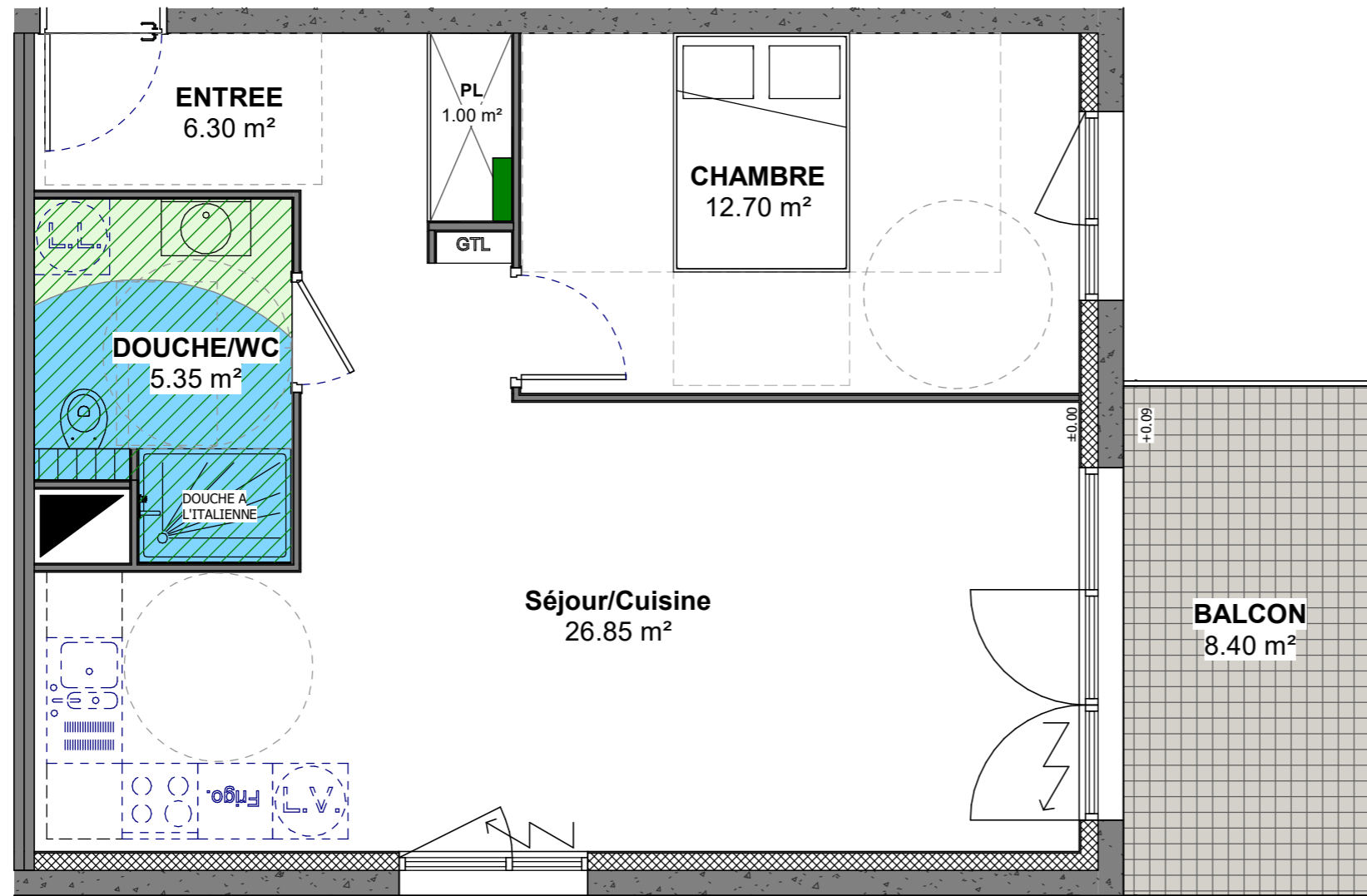
NIVEAU	TYPE	LOGEMENT
R+2	T2	B22







DETAIL DES SURFACES

Séjour/Cuisine	26.85 m <sup>2</sup>
CHAMBRE	12.70 m <sup>2</sup>
ENTREE	6.30 m <sup>2</sup>
DOUCHE/WC	5.35 m <sup>2</sup>
PL	1.00 m <sup>2</sup>
surface habitable	52.20 m <sup>2</sup>
BALCON	8.40 m <sup>2</sup>
surface extérieure	8.40 m <sup>2</sup>

INDICE	B	DATE	13/06/2022
--------	---	------	------------



-  Volet roulant électrique
-  Volume de sécurité électrique
-  Collecteurs
-  Faux plafond

Plan susceptible de modifications en fonction des études techniques

