

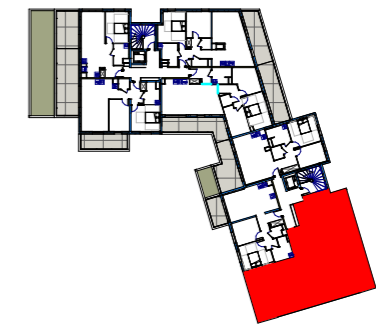


Les Terrasses de l'Europe

Avenue Robert Schuman
57190 FLORANGE

NIVEAU	TYPE	LOGEMENT
R+4	T4	B41

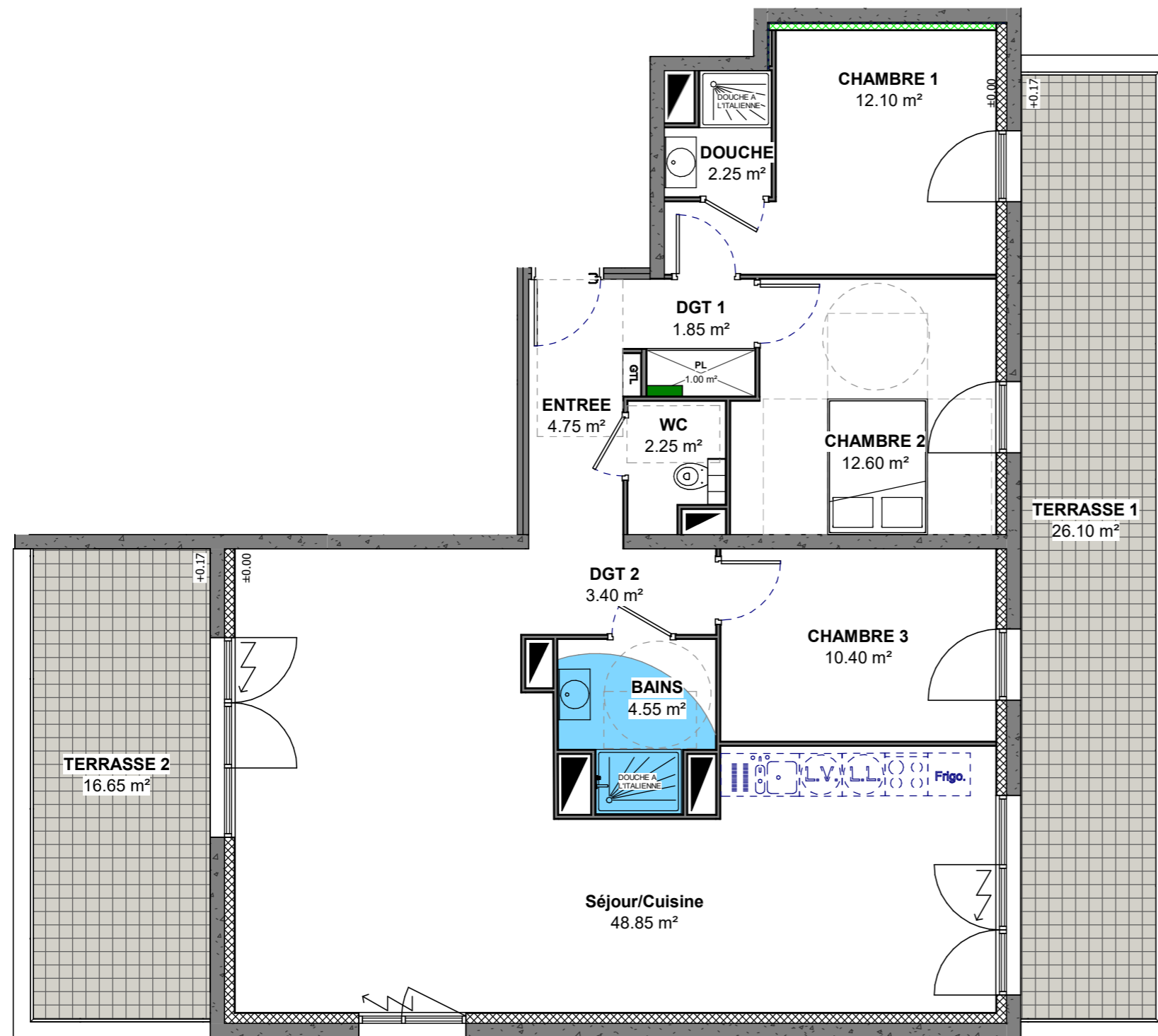
SITUATION







DETAIL DES SURFACES

Séjour/Cuisine	48.85 m ²
CHAMBRE 2	12.60 m ²
CHAMBRE 1	12.10 m ²
CHAMBRE 3	10.40 m ²
ENTREE	4.75 m ²
BAINS	4.55 m ²
DGT 2	3.40 m ²
WC	2.25 m ²
DOUCHE	2.25 m ²
DGT 1	1.85 m ²
PL	1.00 m ²
surface habitable	104.00 m ²
TERRASSE 1	26.10 m ²
TERRASSE 2	16.65 m ²
surface extérieure	42.75 m ²

INDICE	B	DATE	13/06/2022
--------	---	------	------------



-  Volet roulant électrique
-  Volume de sécurité électrique
-  Collecteurs
-  Faux plafond

Plan susceptible de modifications en fonction des études techniques

