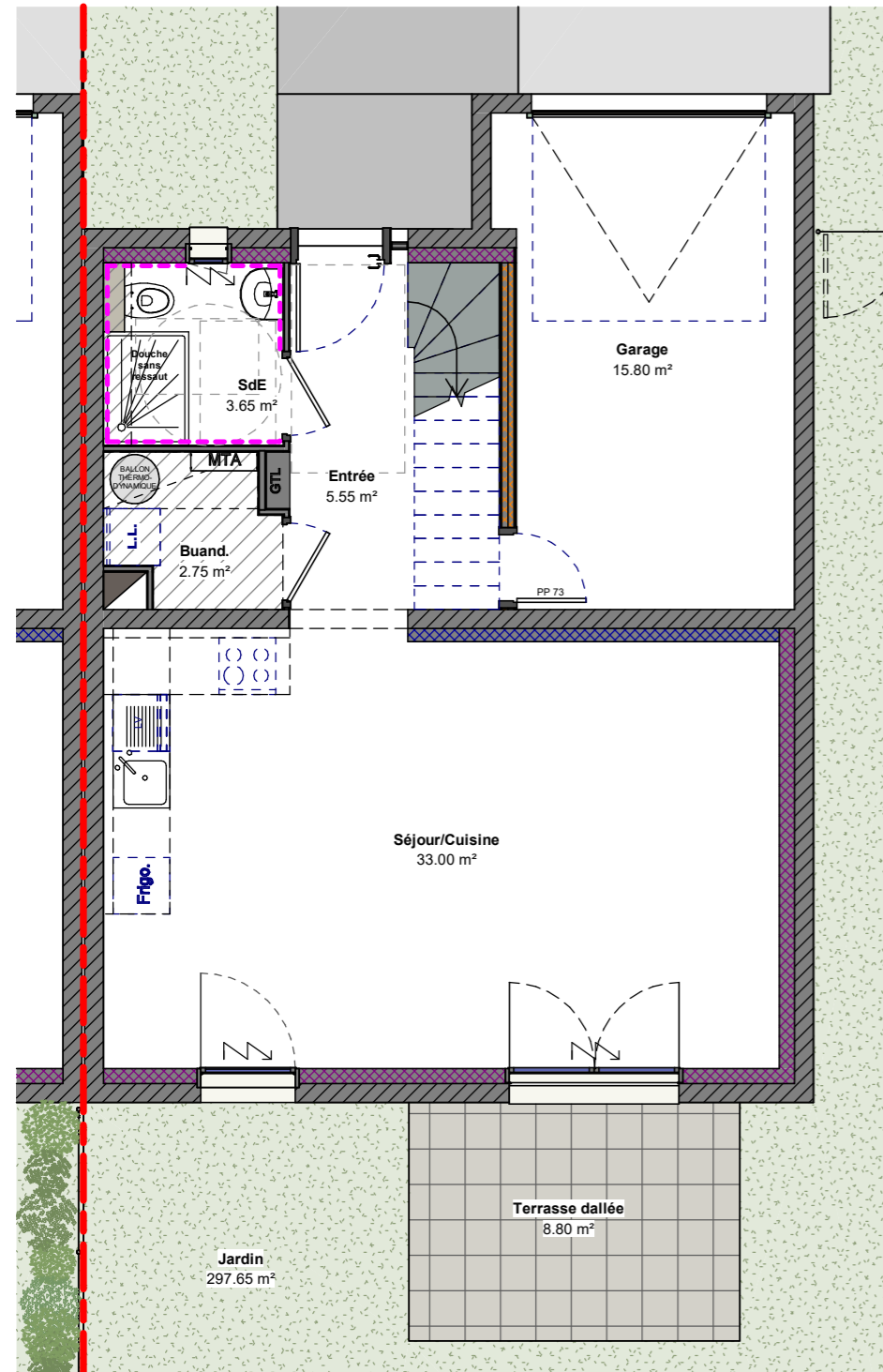
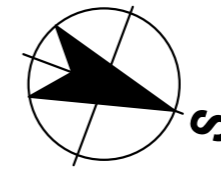
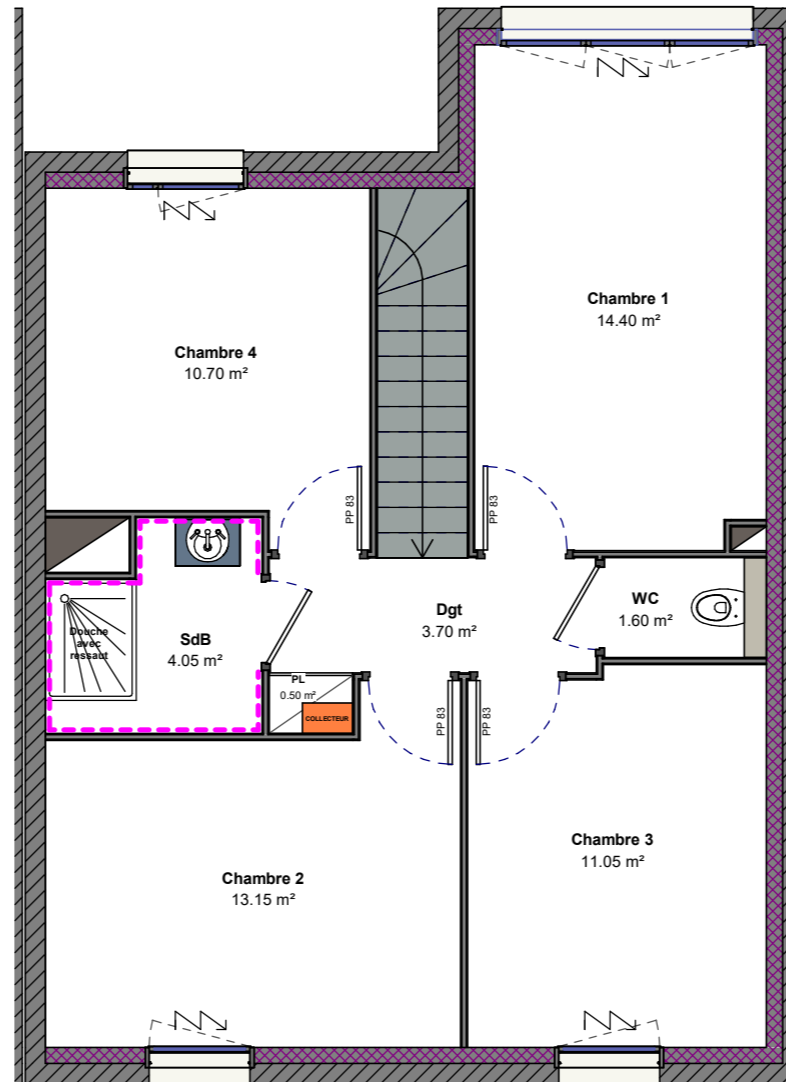


- PLAN DU REZ-DE-CHAUSSEE :



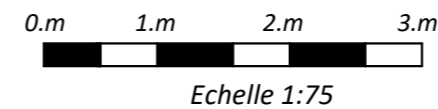
- PLAN DU 1er ETAGE :



LEGENDE :

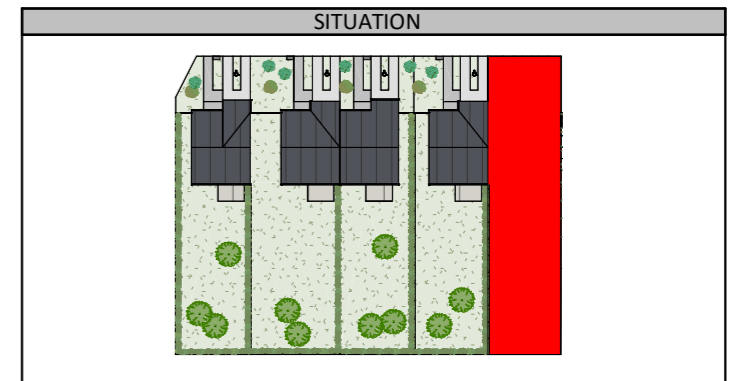
- Faïence murale toute hauteur
- Motorisation volet roulant
- M.T.A M.T.A (Module Thermique d'Appartement)
- Collecteur
- Ballon Thermodynamique
- Faux Plafond

Plan susceptible de modifications en fonction des études techniques



ILOT H1A - 5 pavillons
METZ-GRIGY

NUMERO	TYPE	PLAN
H1A-5	T5	Rez-de-chaussée / Etage



DETAIL DES SURFACES

Séjour/Cuisine	33.00 m²
Chambre 1	14.40 m²
Chambre 2	13.15 m²
Chambre 3	11.05 m²
Chambre 4	10.70 m²
Entrée	5.55 m²
SdB	4.05 m²
Dgt	3.70 m²
SdE	3.65 m²
Buand.	2.75 m²
WC	1.60 m²
PL	0.50 m²

Surface habitable	104.10 m²
Jardin	297.65 m²
Terrasse dallée	8.80 m²
Surface extérieure	306.45 m²
Garage	15.80 m²
Surface annexe	15.80 m²

INDICE	C	DATE	01.08.24
--------	----------	------	-----------------